

TRACK S 8W



8.8W REPLACES



**75W
Hal.**

80% Energy Savings

PRO



- 625 lumen output replaces 75W PAR30 halogen
- High efficacy 71 LPW in Warm White
- Sleek design, integrated driver
- 350° horizontal and 90° vertical adjustment
- Narrow Flood 30° beam angle



40,000 H



DIMMABLE



71
LPW
EFFICACY



5
YR
WARRANTY



80
CRI (Ra)



DIRECTIONAL



LM 79

LM 80

TM 21

IES

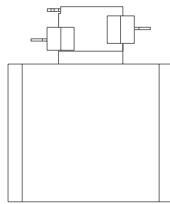
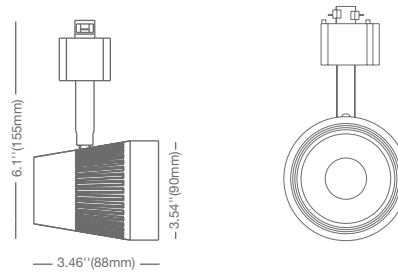


COMPATIBLE WITH H, J & L TRACK TYPE

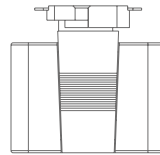


TRACK S 8W

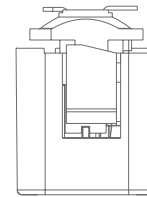
Voltage: 120V
Dimmable: Yes
PF: 0.9
Lifetime: 40,000 hrs
Weight: 0.56lb / 255g
Track type:



H-Halo Track



J- Juno Track
For use with single and two-circuit track applications



L- Lightolier Track (MTO)
For use with single and two-circuit track applications

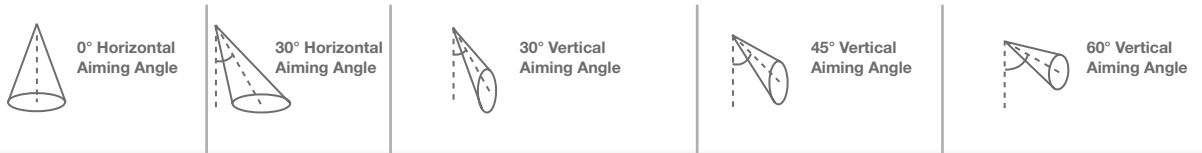
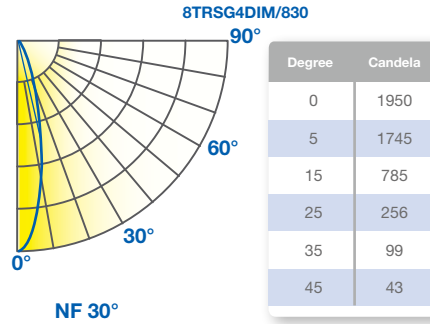
SPECIFICATIONS*

Model	Product	Power (W)	CCT	CRI (typ.)	R9 / R13 (typ.)	Lumens (lm)	LPW	Beam Angle	CBCP (cd)
8TRSG4DIM/827NF30/W/H	16340	8.8	Warm White 2700K	80	60 / 90	600	68	30°	1905
8TRSG4DIM/830NF30/W/H	16346	8.8	Warm White 3000K	80	60 / 90	625	71	30°	1950
8TRSG4DIM/827NF30/W/J	16341	8.8	Warm White 2700K	80	60 / 90	600	68	30°	1905
8TRSG4DIM/830NF30/W/J	16347	8.8	Warm White 3000K	80	60 / 90	625	71	30°	1950
8TRSG4DIM/827NF30/B/H •	16343	8.8	Warm White 2700K	80	60 / 90	600	68	30°	1905
8TRSG4DIM/830NF30/B/H •	16349	8.8	Warm White 3000K	80	60 / 90	625	71	30°	1950
8TRSG4DIM/827NF30/B/J •	16344	8.8	Warm White 2700K	80	60 / 90	600	68	30°	1905
8TRSG4DIM/830NF30/B/J •	16350	8.8	Warm White 3000K	80	60 / 90	625	71	30°	1950

* Specification data is preliminary and may be subject to change
 • Black finish

PHOTOMETRY

Ref.: #DS045-TRS-8W



8TRSG4DIM/830
Flood: 30°
CBCP: 1950

D	FC	L	W	FC	L	W	D	FC	X	L	W	FC	X	L	W	D	FC	X	L	W
4	122	1.8	1.8	79	2.5	2.1	1	244	1.7	2.2	0.9	690	1	1.0	0.7	4	79	2.3	2.5	2.1
5	78	2.3	2.3	51	3.2	2.7	2	61	3.5	4.4	1.8	172	2	2.0	1.3	5	51	2.9	3.2	2.7
6	54	2.8	2.8	35	3.8	3.2	3	27	5.2	6.6	2.8	77	3	2.9	2.0	6	35	3.5	3.8	3.2
7	40	3.2	3.2	26	4.4	3.7	4	15	6.9	8.8	3.7	43	4	3.9	2.6	7	26	4.0	4.4	3.7
8	30	3.7	3.7	20	5.0	4.3	5	10	8.7	11.0	4.6	28	5	4.9	3.3	8	20	4.6	5.0	4.3

Notes and Definitions:

D=Distance to floor or wall
 FC=Footcandles on floor or wall at center beam location
 L=Effective Visual Beam length in feet
 W=Effective Visual Beam width in feet
 X=In vertical aiming applications, (X) is the distance down to the center beam location
 For other CCT use the following multipliers: 2700K. 95.

