

Project Name:	Type:
Part Number:	Date:

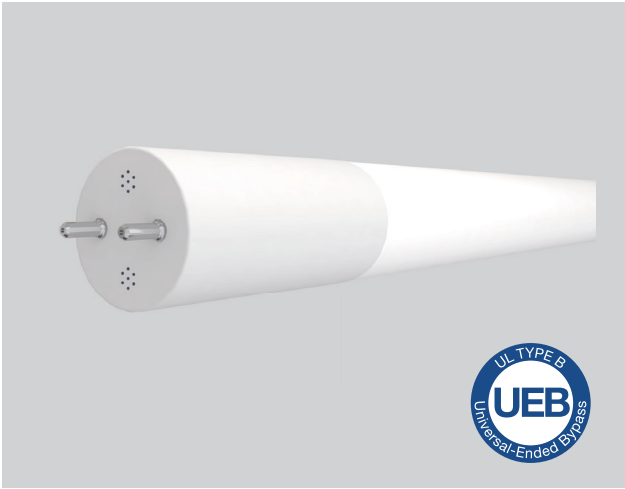


GREENCREATIVE

T8 BYPass (Universal Ended)

FEATURES

- UEB - Universal Ended Bypass: Single or Double Ended installation in Bypass mode
- Operates directly on 120-277V line voltage
- Replaces 2', 3' & 4' T8 Fluorescent lamp
- Ultra-high efficacy up to 170LPW available in 4'
- Frosted glass optimizes light distribution
PET coated glass improves resistance to breakage (optional for 10W)
- 310° wide light emitting area
- Suitable for enclosed fixtures
- Fixture operating temperature: -4°F to 95°F (-20°C to 35°C)
- Lamp ambient temperature: -4°F to 113°F (-20°C to 45°C)
- Calculated* L70 > 70,000hrs
- 5 year limited warranty** / 10 year available
(see EXTENDED WARRANTIES table for information)
- Suitable for all indoor general lighting applications and damp locations



052523



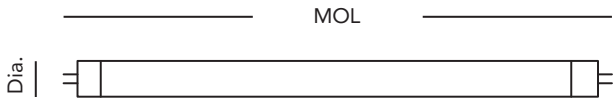
SPECIFICATIONS

Product	Model	Nominal Length	Equiv.	Wattage	Lumens	CCT	CRI	Efficacy (LPW)	Power Factor	THD	Beam Angle	Fixture Rating	Film Coated	DLC / NSF
37394	8.5T8/2F/830/UEB	4'	17W	8.5	1,050	3000K	82	124	0.9	<20%	220°	Enclosed	No	√ / √
37395	8.5T8/2F/835/UEB	4'	17W	8.5	1,050	3500K	82	124	0.9	<20%	220°	Enclosed	No	√ / √
37396	8.5T8/2F/840/UEB	4'	17W	8.5	1,100	4000K	82	129	0.9	<20%	220°	Enclosed	No	√ / √
37397	8.5T8/2F/850/UEB	4'	17W	8.5	1,100	5000K	82	129	0.9	<20%	220°	Enclosed	No	√ / √
37398	12T8/3F/830/UEB	4'	25W	12	1,400	3000K	82	117	0.9	<20%	220°	Enclosed	No	√ / √
37399	12T8/3F/835/UEB	4'	25W	12	1,400	3500K	82	117	0.9	<20%	220°	Enclosed	No	√ / √
37400	12T8/3F/840/UEB	4'	25W	12	1,450	4000K	82	121	0.9	<20%	220°	Enclosed	No	√ / √
37401	10T8/4F/830/UEB	4'	32W	10	1,650	3000K	82	165	0.9	<20%	220°	Enclosed	No	√ / √
37402	10T8/4F/835/UEB	4'	32W	10	1,650	3500K	82	165	0.9	<20%	220°	Enclosed	No	√ / √
37403	10T8/4F/840/UEB	4'	32W	10	1,700	4000K	82	170	0.9	<20%	220°	Enclosed	No	√ / √
37404	10T8/4F/850/UEB	4'	32W	10	1,700	5000K	82	170	0.9	<20%	220°	Enclosed	No	√ / √
37405	10T8/4F/840/UEB/C	4'	32W	10	1,700	4000K	82	170	0.9	<20%	180°	Enclosed	Yes	√ / √
37406	10T8/4F/850/UEB/C	4'	32W	10	1,700	5000K	82	170	0.9	<20%	180°	Enclosed	Yes	√ / √
37407	14T8/4F/835/UEB	4'	32W	14	2,100	3500K	82	150	0.9	<20%	220°	Enclosed	No	√ / √
37408	14T8/4F/840/UEB	4'	32W	14	2,200	4000K	82	157	0.9	<20%	220°	Enclosed	No	√ / √
37409	14T8/4F/850/UEB	4'	32W	14	2,200	5000K	82	157	0.9	<20%	220°	Enclosed	No	√ / √

* In accordance with IESNA TM-21-11, calculated values are based on time durations that are within six times the IESNA LM80-15 total test duration.

** Please visit www.greencreative.com for Limited Warranty terms.

DIMENSION & WEIGHT



Model	Base	MOL	Dia.	Weight
8.5T8/2F/8xx/UEB	G13	23-3/16"	1.0"	0.24 lb
12T8/3F/8xx/UEB	G13	35-3/16"	1.0"	0.33 lb
10T8/4F/8xx/UEB	G13	47-3/16"	1.0"	0.45 lb
10T8/4F/8xx/UEB/C	G13	47-3/16"	1.0"	0.47 lb
14T8/4F/8xx/UEB	G13	47-3/16"	1.0"	0.45 lb

xx - Refers to the CCT



T8 BYPass (Universal Ended)

INSTALLATION

Diagram A – Non-Shunted

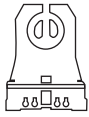
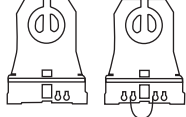
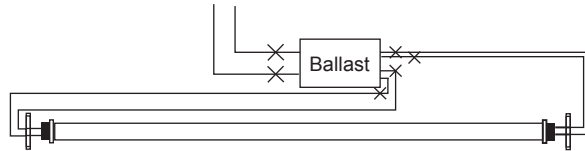


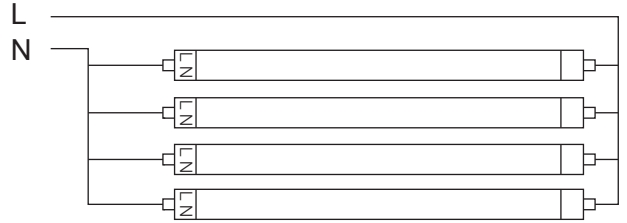
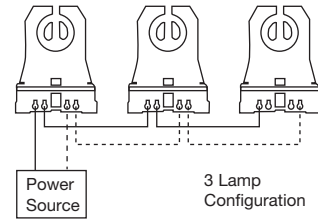
Diagram B – Shunted



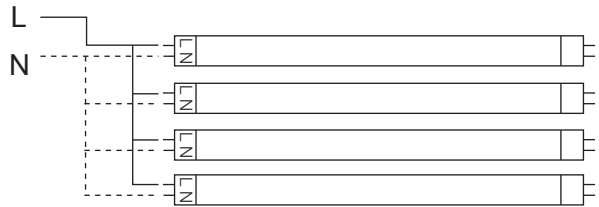
UEB(Single ended + Double ended)



Step 1. Cut all wires connected to the existing ballast, remove the ballast



Step 2. For shunted holders, wire the holders and lamps according to the above diagram.



Step 2. For non-shunted holders, wire the holders and lamps according to the diagram.

ACCESSORY ORDERING INFORMATION

Product	Model	Description	Pictures	Dimensions
34958	5EMDRIVER**	5W Emergency LED Driver		
34959	10EMDRIVER	California Title 20 Compliant 10W Emergency LED Driver		
58012	35EMINVERTER	California Title 20 Compliant 35W Emergency LED Driver (Field Installation)		
58013	35EMINVERTER/CEC	California Title 20 Compliant 35W Emergency Inverter (Field Installation)		
98003	23EMDRIVER	California Title 20 Compliant 23W Emergency LED Driver (Field Installation)		

** Does not meet Title 20 appliance requirements, not for use in California



T8 BYPass (Universal Ended)

EXTENDED WARRANTIES***

Model	Description****
8.5T8/2F/8xx/UEB/10YEARWARRANTY	10 Year warranty for 8.5T8/2F/8xx/UEB/yy
12T8/3F/8xx/UEB/10YEARWARRANTY	10 Year warranty for 12T8/3F/8xx/UEB/yy
10T8/4F/8xx/UEB/10YEARWARRANTY	10 Year warranty for 10T8/4F/8xx/UEB/yy
10T8/4F/8xx/UEB/C/10YEARWARRANTY	10 Year warranty for 10T8/4F/8xx/UEB/C/yy
14T8/4F/8xx/UEB/10YEARWARRANTY	10 Year warranty for 14T8/4F/8xx/UEB/yy

*** Warranty based on a maximum of 4,368 annual operating hours (per year for ten years) and exposure to a maximum fixture operating temperature of 80°F / 27°C.

**** xx – Refers to the CCT yy – Refers to model generations within the same nominal performance. Typically blank, 'R', or 'RC'

CERTIFICATION INFORMATION

Product	Model	DLC ID#
37394	8.5T8/2F/830/UEB	S-7NS4YL
37395	8.5T8/2F/835/UEB	S-2H37RP
37396	8.5T8/2F/840/UEB	S-N5F8PW
37397	8.5T8/2F/850/UEB	S-3HJAVZ
37398	12T8/3F/830/UEB	S-7T8HV2
37399	12T8/3F/835/UEB	S-PY9HTI
37400	12T8/3F/840/UEB	S-D1JQSU
37401	10T8/4F/830/UEB	S-N2LFKT
37402	10T8/4F/835/UEB	S-9U4LOY
37403	10T8/4F/840/UEB	S-0TVDM7
37404	10T8/4F/850/UEB	S-7VS0QT
37405	10T8/4F/840/UEB/C	S-JBTCRA
37406	10T8/4F/850/UEB/C	S-GFAOZ7
37407	14T8/4F/835/UEB	S-6W95MD
37408	14T8/4F/840/UEB	S-F1XLSR
37409	14T8/4F/850/UEB	S-6S0XFY

ORDERING INFORMATION

Model****	Master Carton			Shipping Carton		
	Case Qty	Case Dimensions (LxWxH)	Case Weight	Case Qty	Case Dimensions (LxWxH)	Case Weight
8.5T8/2F/8xx/UEB	N.A.	N.A.	N.A.	25PCS	25-9/16" x 5-15/16" x 5-15/16"	7.6 lb
12T8/3F/8xx/UEB	N.A.	N.A.	N.A.	25PCS	37-3/8" x 5-15/16" x 5-15/16"	10.6 lb
10T8/4F/8xx/UEB	N.A.	N.A.	N.A.	25PCS	49-3/16" x 5-15/16" x 5-15/16"	13.2 lb
10T8/4F/8xx/UEB/C	N.A.	N.A.	N.A.	25PCS	49-3/16" x 5-15/16" x 5-15/16"	13.2 lb
14T8/4F/8xx/UEB	N.A.	N.A.	N.A.	25PCS	49-3/16" x 5-15/16" x 5-15/16"	13.2 lb

xx – Refers to the CCT

Note: All rights reserved. All sizes and specifications are subject to change at any time without notice.