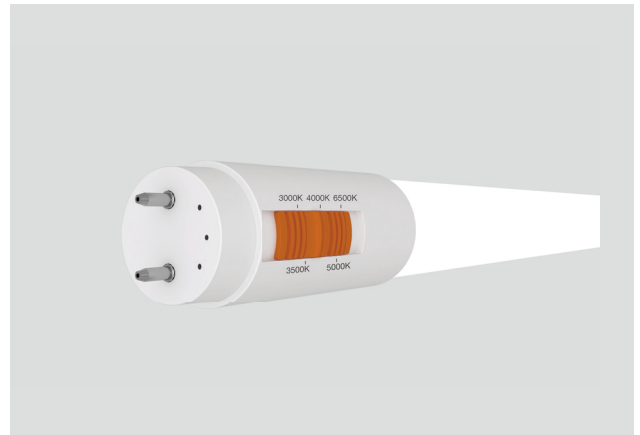




# CCT SELECT T8 EXT (UL TYPE C)

## MODEL

- Model: 9.5T8/2F/8CCTS/EXT
- 10.5T8/3F/8CCTS/EXT
- 11.5T8/4F/8CCTS/EXT
- 14T8/4F/8CCTS/EXT



082823

## 0 - 10V DIMMER COMPATIBILITY

Brand	Series	Model	Load (w)	External Driver (Dimmers are compatible with 120V & 277V unless otherwise noted)							
				15T8T5HEDRIVER/2CH/R 15T8T5HEDRIVER/SD/2CH			15T8T5HEDRIVER/4CH/R 15T8T5HEDRIVER/SD/4CH				
				Dimming Range	1 lamp	2 lamps	Dimming Range	1 lamp	2 lamps	3 lamps	4 lamps
Dimmability	Dimmability	Dimmability	Dimmability		Dimmability	Dimmability					
Lutron	Nova	NTSTV-DV	960W	0-100%	Compatible	Compatible	0-100%	Compatible	Compatible	Compatible	Compatible
	Nova	NFTV	/	0-100%	Compatible	Compatible	0-100%	Compatible	Compatible	Compatible	Compatible
	Diva	DVSTV	960W	0-100%	Compatible	Compatible	0-100%	Compatible	Compatible	Compatible	Compatible
	Diva	DVSCTV	1000W	0-100%	Compatible	Compatible	0-100%	Compatible	Compatible	Compatible	Compatible
Leviton	Illumatech	IP710-LFZ	1200W	0-100%	Compatible	Compatible	0-100%	Compatible	Compatible	Compatible	Compatible

GREEN CREATIVE has provided this dimmer compatibility chart for guidance when selecting a dimmer and GREEN CREATIVE external driver tube combination. Lamps were tested for compatibility with the above GREEN CREATIVE external drivers and listed dimmers. Dimmers that do not appear on the chart might still be compatible but have not been tested. All testing has been performed with a stable main supply. The quality of the local main, existing installation and wiring may affect lamp performance. Since no assurance can be provided regarding these factors, it is a general recommendation to perform a test on-site prior to installing the LED lamps.