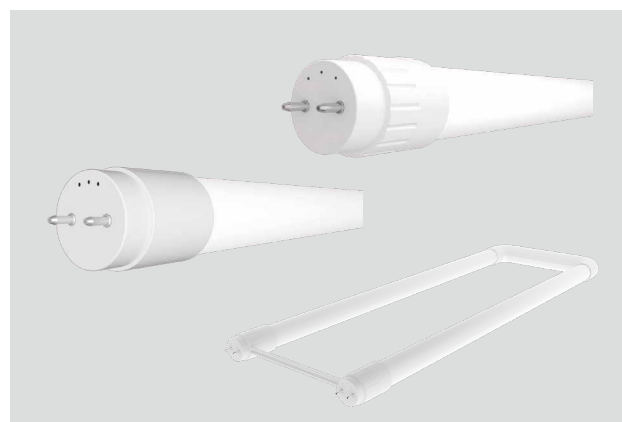




T8 EXT

MODEL

Model: 9.5T8/2F/xxx/EXT
 10.5T8/3F/xxx/EXT
 11.5T8/4F/xxx/EXT
 11.5T8/4F/xxx/EXT/R
 14T8/4F/xxx/EXT
 14T8/4F/xxx/EXT/R
 14.5T8U6/xxx/EXT



041023

Where xxx means 824-965 which indicates CRI and color temperature

EMERGENCY DRIVER COMPATIBILITY

Model: 9.5T8/2F/xxx/EXT 11.5T8/4F/xxx/EXT 11.5T8/4F/xxx/EXT/R

Brand	Model	Compatibility
Iota	ILB-CP05-B	Compatible
	ILB-CP07-B	Compatible
	ILB-SL-CP05	Compatible
	ILB-SL-CP07	Compatible
Fulham	FHSCP-UNV-10.7WL	Compatible
	FHSCP-UNV-13.7WL	Compatible
	FHSCP-UNV-17WL	Compatible

EMERGENCY DRIVER COMPATIBILITY

Model: 10.5T8/3F/xxx/EXT

Brand	Model	Compatibility
Iota	ILB-CP05-B	Compatible
	ILB-CP07-B	Compatible
	ILB-CP10-B	Compatible
	ILB-SL-CP05	Compatible
	ILB-SL-CP07	Compatible
	ILB-SL-CP10	Compatible
Fulham	FHSCP-UNV-10.7WL	Compatible
	FHSCP-UNV-13.7WL	Compatible
	FHSCP-UNV-17WL	Compatible



T8 EXT

EMERGENCY DRIVER COMPATIBILITY

Model: 14T8/4F/xxx/EXT 14T8/4F/xxx/EXT/R

Brand	Model	Compatibility
Iota	ILB-CP05-B	Compatible
	ILB-CP07-B	Compatible
	ILB-CP10-B	Compatible
	ILB-SL-CP05	Compatible
	ILB-SL-CP07	Compatible
Philips	BSL310C-DF	Compatible
Fulham	FHSCP-UNV-10.7WL	Compatible
	FHSCP-UNV-13.7WL	Compatible
	FHSCP-UNV-17WL	Compatible

EMERGENCY DRIVER COMPATIBILITY

Model: 14.5T8U6/xxx/EXT

Brand	Model	Compatibility
Iota	ILB-CP05-B	Compatible
	ILB-CP07-B	Compatible
	ILB-CP10-B	Compatible
	ILB-SL-CP05	Compatible
	ILB-SL-CP07	Compatible
	ILB-SL-CP10	Compatible
Philips	BSL310	Compatible
	BSL310M	Compatible
	BSL310C	Compatible
	BSL310C-DF	Compatible
Fulham	FHSCP-UNV-10.7WL	Compatible
	FHSCP-UNV-13.7WL	Compatible
	FHSCP-UNV-17WL	Compatible

GREEN CREATIVE has provided this emergency ballast compatibility chart for guidance when selecting an emergency ballast and lamp combination. Lamps were tested for compatibility with the above listed emergency ballasts. Emergency ballasts that do not appear on the chart might still be compatible but have not been tested. All testing has been performed with a stable main supply. The quality of the local main, existing installation and wiring, as well as different manufacturer versions of the above emergency ballasts may affect lamp performance. Since no assurance can be provided regarding these factors, it is a general recommendation to perform a test on-site prior to installing the LED lamps.