

LM-79-19 TEST REPORT

for

GREEN CREATIVE LTD

Room 3603, Level 36, Tower 1, Enterprise Square Five, 38 Wang Chiu Road, Kowloon Bay, KL,
Hong Kong

LED Lamp

Model: 9PLO/827/HYB/PF

Laboratory: Leading Testing Laboratories

NVLAP CODE: 200960-0

3rd Floor, Bld. 2, NO. 96 Longchuanwu Rd Qianjiang Economy Dev. Zone, YuhangDist,
Hangzhou, Zhejiang Province, China 311100

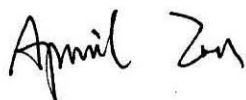
Tel: +86571 86376106

www.ledtestlab.com

Report No.: HZ22080002e

The laboratory that conducted the testing detailed in this report has been accredited for SSL by NVLAP.

Review by:



Engineer: April Zou
Aug. 09, 2022

Approved by:



Manager: Jim Zhang
Aug. 09, 2022

Note: This report does not imply product certification, approval, or endorsement by NVLAP, NIST, or any agency of the Federal Government.

TEST SUMMARY

Sample Tested: **9PLO/827/HYB/PF**

Luminous Efficacy (Lumens /Watt)	Total Luminous Flux (Lumens)	Power (Watts)	Power Factor
123.1	1069.9	8.69	0.9758
CCT (K)	CRI	Stabilization Time (Light & Power)	
2776	83.0	50	

Table 1: Executive Data Summary

Note: The above results are recorded/ derived from measurements made using an Integrating Sphere.

Test specifications:

Date of Receipt	: Aug. 01, 2022
Date of Test	: Aug. 04, 2022
Test item	: Total Luminous Flux, Luminous Distribution Intensity, Luminous Efficacy, Correlated Color Temperature, Color Rendering Index, Chromaticity Coordinate, Electrical parameters
Reference Standard	: IESNA LM-79-2019 Approved Method: Electrical and Photometric Measurements of Solid-State Lighting Products ANSI/IES TM-30-18 IES Method for Evaluating Light Source Color Rendition

TABLE OF CONTENT

LM-79-19 TEST REPORT.....	1
TEST SUMMARY	2
SAMPLE PHOTO	4
TEST RESULTS	5
Sphere-Spectroradiometer Method.....	5
Goniophotometer Method	6
Spectral Power Distribution - Sphere Spectroradiometer Method	7
Chromaticity Diagram - Sphere Spectroradiometer Method.....	8
Nominal CCT Quadrangles – Sphere Spectroradiometer Method	9
Color Rendition Report – Sphere Spectroradiometer Method	10
Zonal Lumen Tabulation- Goniophotometer Method	11
Illuminance Plots- Goniophotometer Method	12
Luminous Intensity Distribution Plots- Goniophotometer Method.....	13
Luminous Intensity Data- Goniophotometer Method	14
EQUIPMENT LIST	16
TEST METHODS	16
Seasoning of SSL Product.....	16
Sphere-Spectroradiometer Method- Photometric and Electrical Measurements.....	16
Goniophotometer Method	17
Photometric and Electrical Measurements	17
Color Characteristics Measurements.....	17

SAMPLE PHOTO



Figure 1- Overview of the sample

Equipment Under Test(EUT)

Name	: LED Lamp
Model	: 9PLO/827/HYB/PF
Electrical Ratings	: 120-277V, 50/60Hz, 9W
Product Description	: 2700K
Manufacturer	: GREEN CREATIVE LTD
Address	: Room 3603, Level 36, Tower 1, Enterprise Square Five, 38 Wang Chiu Road, Kowloon Bay, KL, Hong Kong

TEST RESULTS

Test ambient temperature was 26.0 °C.

Base orientation was base up. Test was conducted without a dimmer in the circuit.

The stabilization time of the sample was 50 minutes, and the total operating time including stabilization was 55 minutes.

Sphere-Spectroradiometer Method

Parameter	Result	
Test Voltage (V)	120.0	277.0
Voltage frequency (Hz)	60	60
Test Current (A)	0.074	0.036
Power Factor	0.9758	0.8934
Test Power (W)	8.69	9.02
THD A%	12.53	23.54
Luminous Efficacy (lm/W)	123.1	123.5
Total Luminous Flux (lm)	1069.9	1113.6
Color Rendering Index (CRI)	83.0	
R9	9	
Correlated Color Temperature (CCT)(K)	2776	
Chromaticity Chroma x	0.4517	
Chromaticity Chroma y	0.4055	
Chromaticity Chroma u	0.2595	
Chromaticity Chroma v	0.3494	
Duv	-0.0012	
Chromaticity Chroma u'	0.2595	
Chromaticity Chroma v'	0.5241	

Special Color Rendering Indices	
R1	82
R2	92.8
R3	94.3
R4	80.8
R5	82.6
R6	92.3
R7	81.1
R8	57.7
R9	9
R10	84.3
R11	81.1
R12	78
R13	84.7
R14	97.6

Table 2: Test data per Sphere-Spectroradiometer Method

Note: According to CIE 1976 (u', v') diagram, $u' = u = 4x/(-2x+12y+3)$, $v' = 3v/2 = 9y/(-2x+12y+3)$.

Goniophotometer Method

Test ambient temperature was 24.8 °C.

The photometric distance is 2.47 m.

Luminous data was taken at 0.5 vertical intervals and 10 horizontal intervals.

Parameter	Result
Test Voltage (V)	120.0
Voltage frequency (Hz)	60
Test Current (A)	0.075
Power Factor	0.9773
Power (W)	8.72
Luminous Efficacy (lm/W)	121.9
Total Luminous Flux (lm)	1063.2
Beam Angle (°)	335.1 (0°-180°) / 335.0 (90°-270°)
Center Beam Candle Power (cd)	9.68
Maximum Beam Candle Power (cd)	117.7 (At: C=320.0, Gamma=88.5)
Spacing Criteria	4.90 (0°-180°) / 4.90 (90°-270°)
Zonal Lumens in the 0 °-60 °Zone	19.73%
Zonal Lumens in the 60 °-90 °Zone	32.54%
Zonal Lumens in the 90 °-120 °Zone	31.30%
Zonal Lumens in the 120 °-180 °Zone	16.43%

Table 3: Test data per Goniophotometer Method

Spectral Power Distribution - Sphere Spectroradiometer Method

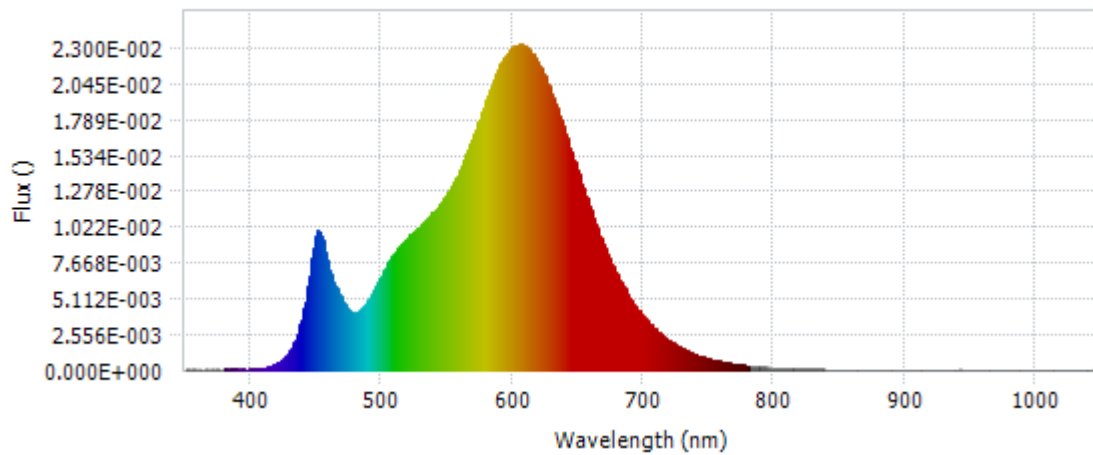
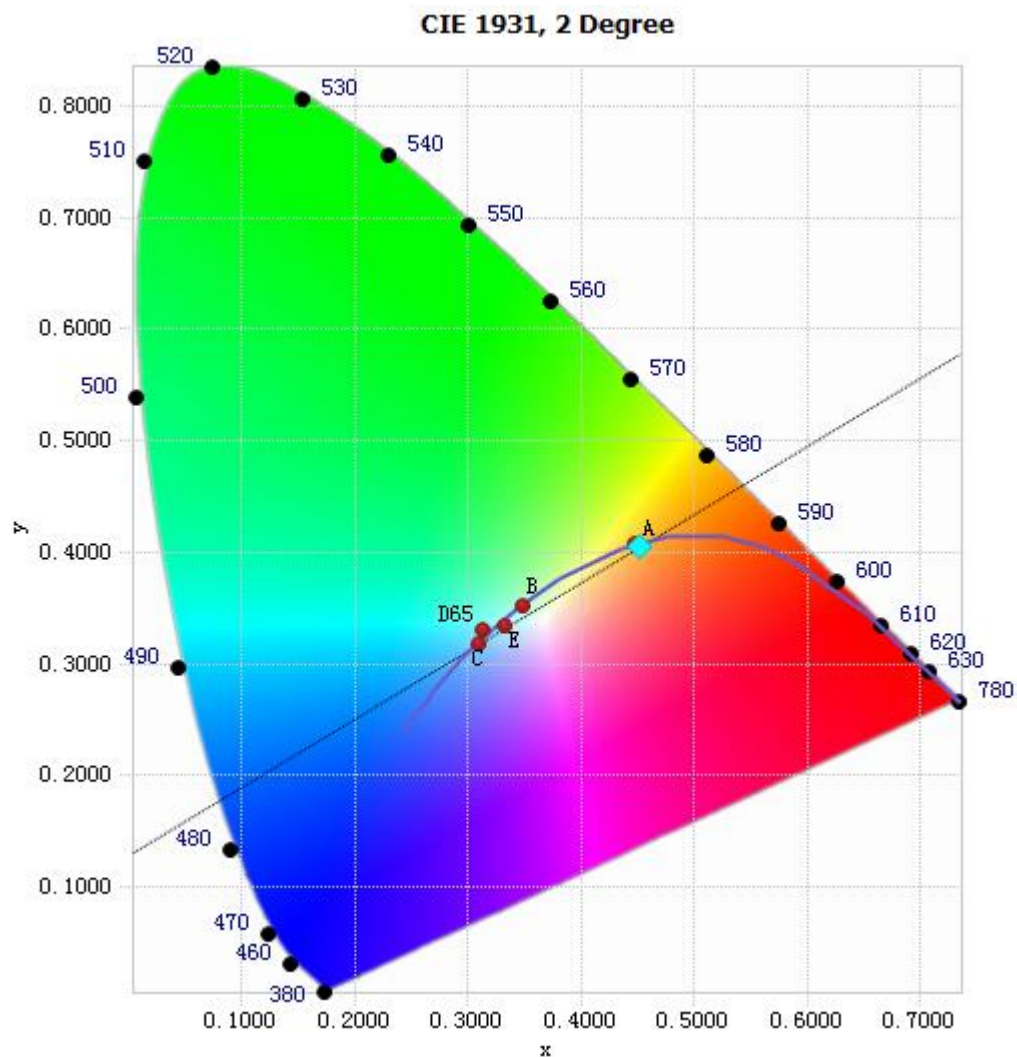


Chart 1: Spectral Power Distribution

Spectral Distribution over Visible Wavelength							
WL(nm)	Radiant(Watts)	WL(nm)	Radiant(Watts)	WL(nm)	Radiant(Watts)	WL(nm)	Radiant(Watts)
380	7.27E-05	485	4.43E-03	590	2.16E-02	695	4.48E-03
385	7.94E-05	490	5.02E-03	595	2.24E-02	700	3.84E-03
390	6.44E-05	495	5.87E-03	600	2.29E-02	705	3.32E-03
395	6.52E-05	500	6.77E-03	605	2.32E-02	710	2.84E-03
400	6.76E-05	505	7.63E-03	610	2.31E-02	715	2.45E-03
405	9.11E-05	510	8.34E-03	615	2.26E-02	720	2.11E-03
410	1.38E-04	515	9.00E-03	620	2.19E-02	725	1.80E-03
415	2.74E-04	520	9.46E-03	625	2.09E-02	730	1.54E-03
420	4.91E-04	525	9.89E-03	630	1.97E-02	735	1.31E-03
425	8.67E-04	530	1.03E-02	635	1.84E-02	740	1.12E-03
430	1.43E-03	535	1.08E-02	640	1.70E-02	745	9.61E-04
435	2.37E-03	540	1.13E-02	645	1.56E-02	750	8.10E-04
440	3.94E-03	545	1.19E-02	650	1.42E-02	755	6.98E-04
445	6.74E-03	550	1.26E-02	655	1.28E-02	760	6.00E-04
450	9.60E-03	555	1.33E-02	660	1.14E-02	765	5.11E-04
455	9.22E-03	560	1.43E-02	665	1.01E-02	770	4.40E-04
460	7.08E-03	565	1.54E-02	670	8.92E-03	775	3.72E-04
465	6.01E-03	570	1.66E-02	675	7.84E-03	780	3.24E-04
470	5.06E-03	575	1.79E-02	680	6.85E-03		
475	4.25E-03	580	1.93E-02	685	5.96E-03		
480	4.06E-03	585	2.05E-02	690	5.17E-03		

Table 4: Spectral Power Distribution Numerical Data per Sphere - Spectroradiometer Method

Chromaticity Diagram - Sphere Spectroradiometer Method



Tristimulus values(x, y): (0.4517, 0.4055)

Chart 2: Chromaticity Diagram per Sphere - Spectroradiometer Method

Note: The location on the diagram of the tristimulus coordinates are indicated by the blue diamond.

Nominal CCT Quadrangles – Sphere Spectroradiometer Method

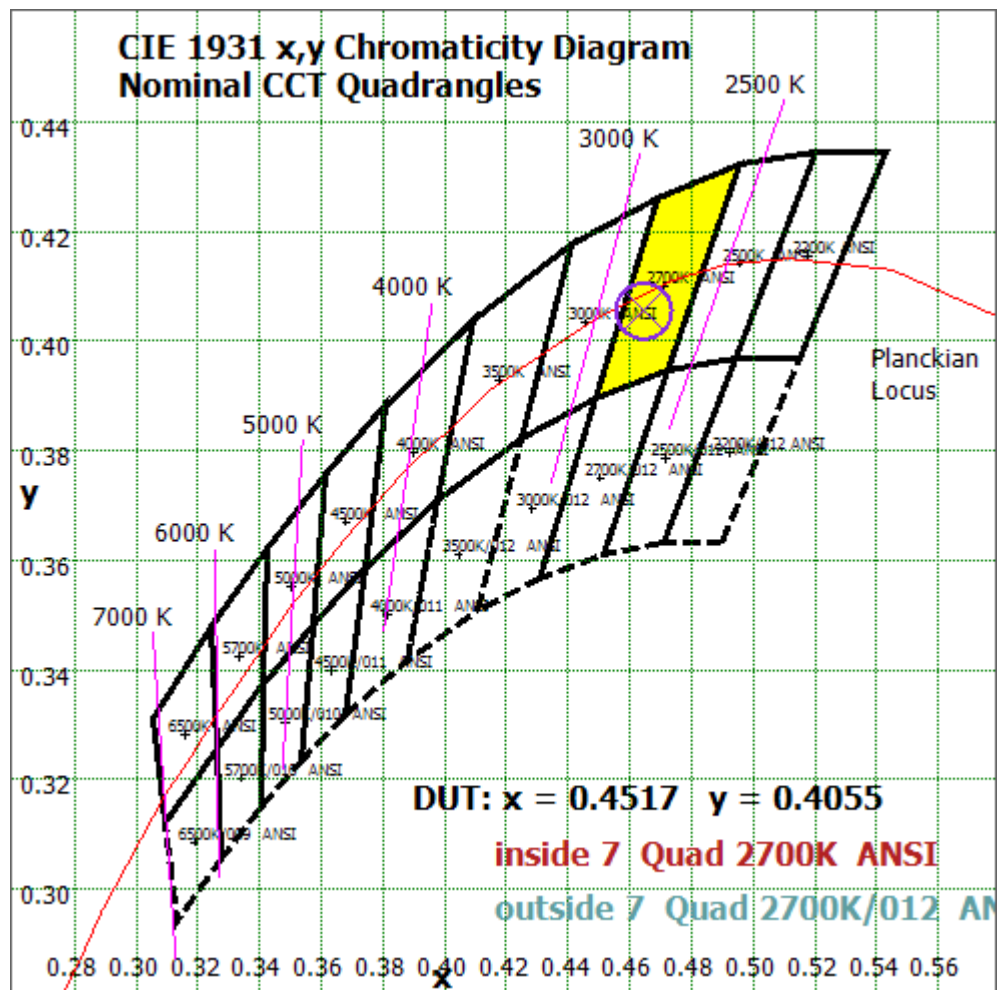


Chart 3: Plot of Lamp x/y coordinates on CIE 1931 Chromaticity Diagram

Color Rendition Report – Sphere Spectroradiometer Method

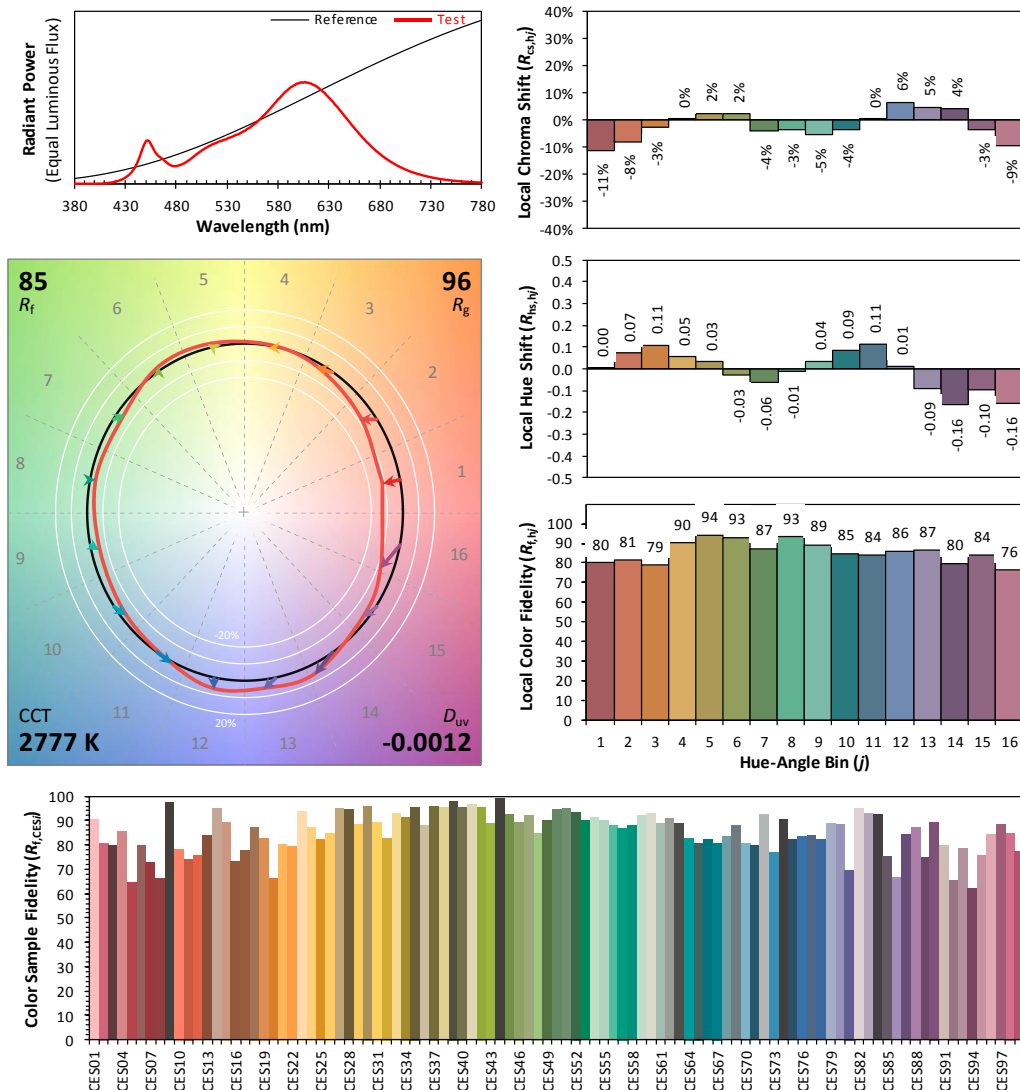
ANSI/IES TM-30-18 Color Rendition Report

Source: LED

Manufacturer: GREEN CREATIVE LTD

Date: 2022/08/04

Model: 9PLO/827/HYB/PF



Notes: This is a recommended method for displaying ANSI/IES TM-30-18 information.

x 0.4517
 y 0.4055
 u' 0.2595
 v' 0.5241

CIE 13.3-1995
(CRI)
 R_a 83
 R_9 9

Colors are for visual orientation purposes only. Created with the ANSI/IES TM-30-18 Calculator Version 2.00.

Chart 4: Full Report Created with the IES TM-30 Calculator

Note: The values in this diagram might be a little different from the values in Table 2 due to rounding.

Zonal Lumen Tabulation- Goniophotometer Method

$\gamma(^{\circ})$	Lumens	% Total
0- 10	1.363	0.13%
10- 20	7.668	0.72%
20- 30	20.331	1.91%
30- 40	38.273	3.60%
40- 50	59.762	5.62%
50- 60	82.353	7.75%
60- 70	102.804	9.67%
70- 80	117.915	11.09%
80- 90	125.264	11.78%
90-100	123.683	11.63%
100-110	113.264	10.65%
110-120	95.839	9.01%
120-130	74.293	6.99%
130-140	51.766	4.87%
140-150	31.113	2.93%
150-160	14.322	1.35%
160-170	3.1	0.29%
170-180	0.039	0.00%
Total	1063.2	100%

$\gamma(^{\circ})$	Lumens	% Total
0- 60	209.75	19.73%
60- 90	345.983	32.54%
0-90	555.733	52.27%
90- 180	507.419	47.73%
0- 180	1063.2	100%

Table 5: Zonal Lumen

Illuminance Plots- Goniophotometer Method

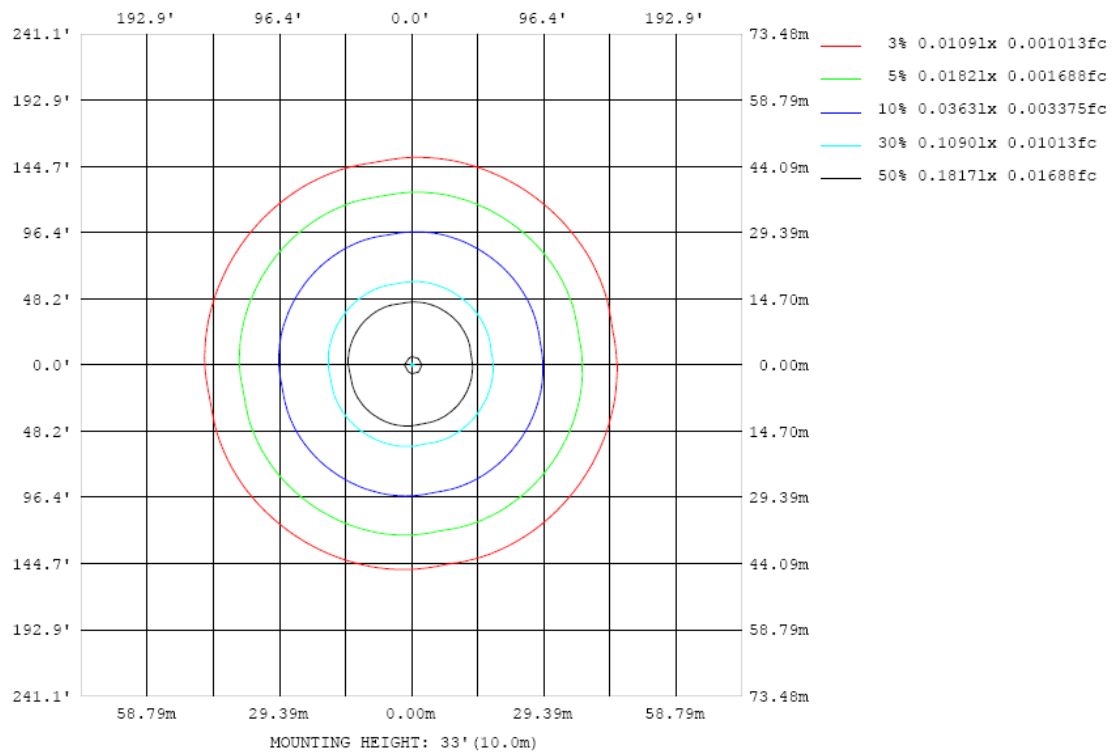


Chart 5: Illuminance Plot (Footcandles)

Luminous Intensity Distribution Plots- Goniophotometer Method

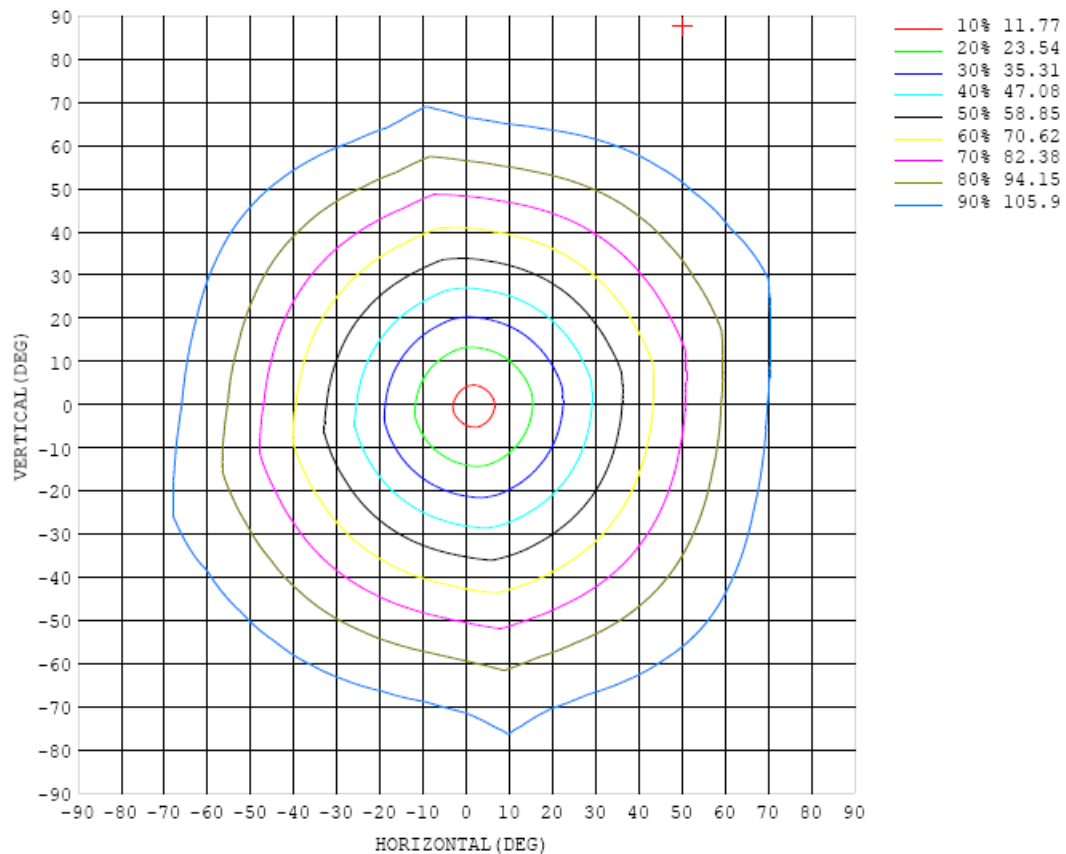


Chart 6: Isocandela Plot

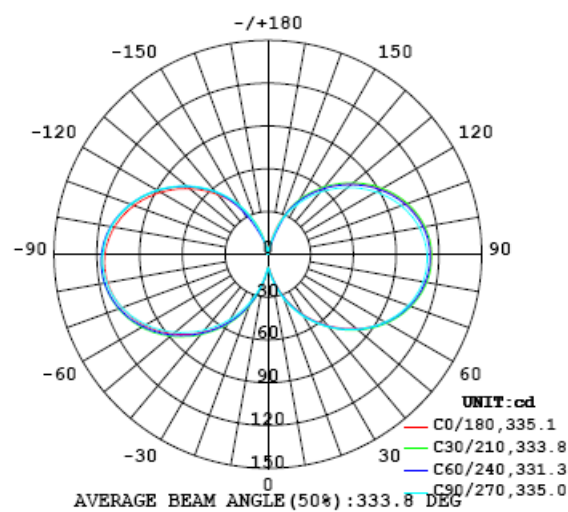


Chart 7: Polar Candela Distribution

Luminous Intensity Data- Goniophotometer Method

Table---1 UNIT: cd

C (DEG) γ (DEG)	0	10	20	30	40	50	60	70	80	90	100	110	120	130	140	150	160	170	180
0	9.68	9.68	9.68	9.68	9.68	9.68	9.68	9.68	9.68	9.68	9.68	9.68	9.68	9.68	9.68	9.68	9.68	9.68	9.68
5	10.5	10.5	10.5	10.6	10.7	10.8	11.0	11.2	11.6	11.9	12.2	12.5	12.8	13.0	13.2	13.4	13.5	13.6	13.8
10	15.6	15.7	15.8	15.9	16.0	16.2	16.3	16.5	17.0	17.6	18.1	18.6	19.1	19.5	19.8	20.0	20.1	20.2	20.7
15	22.9	23.1	23.2	23.4	23.5	23.6	23.7	23.7	24.2	25.0	25.8	26.4	27.0	27.5	27.8	28.1	28.1	28.1	28.7
20	31.1	31.4	31.6	31.7	31.8	31.9	31.9	31.7	32.1	33.1	34.1	34.9	35.6	36.2	36.5	36.7	36.6	36.4	37.4
25	39.7	40.2	40.4	40.6	40.6	40.7	40.6	40.2	40.4	41.7	42.8	43.7	44.5	45.1	45.5	45.6	45.4	45.0	46.3
30	48.5	49.0	49.2	49.4	49.5	49.5	49.2	48.7	48.6	50.1	51.3	52.3	53.1	53.7	54.2	54.2	53.9	53.3	54.8
35	56.9	57.6	57.8	57.9	58.0	57.9	57.6	56.9	56.4	58.4	59.8	60.7	61.6	62.3	62.8	62.7	62.3	61.4	63.2
40	65.3	66.0	66.2	66.4	66.4	66.3	65.9	65.0	64.3	66.3	68.0	69.0	70.1	70.7	71.1	71.1	70.4	69.2	71.4
45	73.4	74.2	74.5	74.6	74.6	74.4	73.9	72.9	71.8	74.2	75.9	77.1	78.0	78.7	79.2	79.1	78.4	76.9	79.3
50	81.2	82.1	82.3	82.4	82.4	82.2	81.6	80.5	79.0	81.7	83.5	84.6	85.5	86.3	86.8	86.7	85.9	84.0	86.8
55	88.5	89.5	89.6	89.8	89.6	89.4	88.9	87.5	85.7	88.6	90.5	91.5	92.6	93.3	93.7	93.7	92.8	90.7	93.7
60	95.2	96.3	96.3	96.3	96.2	95.9	95.4	94.1	92.0	94.9	96.8	97.8	98.7	99.5	100	100.0	99.1	96.7	99.8
65	101	102	102	102	102	102	101	99.5	97.2	100	102	103	104	105	105	105	104	102	105
70	106	107	107	107	107	106	106	104	102	105	107	108	108	109	110	110	109	106	109
75	110	111	111	110	110	110	109	108	105	108	110	111	111	112	113	113	112	109	112
80	113	114	113	113	113	113	112	111	107	111	112	113	114	114	115	115	114	111	114
85	114	115	115	115	114	114	114	112	108	112	113	114	115	115	116	116	115	111	115
90	115	115	115	115	114	114	114	112	109	112	113	114	114	115	115	115	114	111	114
95	114	115	114	114	114	113	113	111	108	110	112	113	113	114	114	114	112	109	112
100	111	112	112	112	112	111	111	109	105	108	110	110	110	110	111	111	109	106	109
105	108	109	109	109	108	108	107	105	102	104	106	106	106	107	107	107	105	102	105
110	103	104	104	104	104	104	103	101	97.7	99.6	101	101	101	102	102	101	100	97.4	100
115	97.9	99.0	99.0	98.8	98.5	98.1	97.1	95.4	92.3	94.0	95.3	95.6	95.8	95.8	96.0	95.3	94.1	91.4	93.8
120	91.6	92.7	92.8	92.6	92.3	91.8	90.8	88.9	86.1	87.5	88.7	89.1	89.2	89.3	89.3	88.6	87.3	84.8	87.1
125	84.5	85.6	85.8	85.6	85.3	84.7	83.7	82.0	79.4	80.4	81.6	82.0	82.0	82.0	81.8	81.1	79.9	77.6	79.5
130	76.9	78.0	78.2	78.1	77.8	77.2	76.2	74.5	72.2	72.9	73.8	74.2	74.2	74.2	74.0	73.2	72.0	70.0	71.6
135	68.9	69.8	70.1	70.1	69.7	69.2	68.1	66.6	64.5	65.0	65.7	66.1	66.1	66.0	65.7	64.9	63.8	62.0	63.3
140	60.4	61.3	61.7	61.8	61.3	60.9	59.8	58.4	56.5	56.7	57.3	57.6	57.6	57.5	57.1	56.3	55.2	53.8	54.7
145	51.9	52.6	53.0	53.1	52.8	52.2	51.3	49.9	48.4	48.2	48.7	48.9	48.9	48.7	48.3	47.5	46.5	45.3	46.0
150	43.1	43.8	44.1	44.2	43.9	43.3	42.5	41.3	40.0	39.7	39.9	40.0	39.8	39.6	39.2	38.4	37.7	36.7	37.0
155	33.7	34.3	33.9	33.5	33.3	32.8	33.1	32.5	31.6	31.1	31.1	31.0	30.8	30.5	30.0	29.4	28.8	28.1	28.1
160	23.2	23.3	21.8	20.2	18.4	15.9	16.0	18.4	21.4	22.0	21.8	21.4	20.9	20.6	20.6	20.3	20.0	19.5	19.3
165	11.4	10.7	8.92	7.54	5.96	3.35	2.21	3.68	8.09	9.00	9.58	8.98	8.80	8.97	9.17	9.40	9.68	9.78	9.65
170	2.01	1.62	1.11	0.75	0.68	0.79	0.59	0.55	0.42	0.60	0.63	0.49	0.34	0.45	0.57	0.52	0.51	0.61	0.63
175	0.36	0.33	0.32	0.30	0.29	0.27	0.26	0.24	0.23	0.22	0.21	0.21	0.20	0.18	0.17	0.17	0.17	0.17	0.16
180	0.04	0.04	0.04	0.05	0.05	0.06	0.06	0.06	0.06	0.06	0.06	0.06	0.06	0.06	0.06	0.06	0.05	0.05	0.06

Table 6: Luminous Intensity Data

Table--2

UNIT: cd

C (DEG) γ (DEG)	190	200	210	220	230	240	250	260	270	280	290	300	310	320	330	340	350		
0	9.68	9.68	9.68	9.68	9.68	9.68	9.68	9.68	9.68	9.68	9.68	9.68	9.68	9.68	9.68	9.68	9.68		
5	13.9	14.0	14.0	13.9	13.7	13.5	13.2	12.9	12.6	12.2	12.0	11.7	11.5	11.3	11.1	10.8	10.6		
10	20.9	21.0	21.0	20.8	20.6	20.2	19.7	19.2	18.6	18.3	18.0	17.7	17.4	17.0	16.6	16.2	15.8		
15	29.1	29.3	29.4	29.2	28.9	28.4	27.8	27.0	26.4	26.2	25.9	25.5	25.2	24.8	24.2	23.6	23.1		
20	38.0	38.3	38.3	38.2	37.9	37.2	36.4	35.4	34.9	34.9	34.6	34.2	33.8	33.4	32.7	32.0	31.1		
25	47.0	47.3	47.5	47.4	47.0	46.3	45.3	44.0	43.6	43.8	43.7	43.3	42.9	42.3	41.6	40.8	39.6		
30	55.7	56.1	56.2	56.2	55.8	55.1	54.0	52.5	52.3	52.7	52.6	52.4	52.0	51.4	50.6	49.6	48.1		
35	64.3	64.7	65.0	64.9	64.4	63.6	62.4	60.6	60.8	61.3	61.4	61.1	60.7	60.2	59.3	58.1	56.3		
40	72.7	73.2	73.5	73.4	72.9	72.1	70.7	68.6	69.1	69.8	70.0	69.8	69.4	68.8	67.8	66.5	64.4		
45	80.7	81.3	81.5	81.6	81.1	80.2	78.8	76.4	77.2	78.2	78.2	78.1	77.7	77.3	76.2	74.7	72.2		
50	88.2	88.9	89.1	89.1	88.8	87.9	86.4	83.7	84.9	86.0	86.2	86.0	85.7	85.1	84.1	82.5	79.8		
55	95.2	95.8	96.1	96.1	95.8	94.9	93.5	90.5	92.2	93.4	93.5	93.3	92.9	92.6	91.5	89.9	87.0		
60	101	102	102	102	102	101	99.8	96.7	98.7	99.9	100.0	99.9	99.6	99.3	98.4	96.7	93.5		
65	107	107	107	108	107	107	105	102	104	106	106	106	105	105	104	103	99.2		
70	111	111	112	112	112	111	110	106	109	110	110	110	110	110	109	107	104		
75	114	114	115	115	115	114	113	110	112	114	114	114	114	114	113	111	108		
80	116	116	116	117	117	116	115	112	115	116	116	116	116	116	116	114	110		
85	117	117	117	117	117	117	116	113	116	117	117	117	118	118	117	116	112		
90	116	116	116	117	117	117	115	113	116	117	117	117	117	118	117	116	112		
95	114	114	115	115	115	115	114	111	114	116	116	116	116	117	116	115	111		
100	111	111	112	112	112	112	111	108	112	113	113	114	114	114	114	112	109		
105	107	107	108	108	108	108	107	105	108	109	110	110	110	111	110	109	106		
110	101	102	102	103	103	103	102	99.6	103	104	105	105	106	106	105	104	101		
115	95.4	95.9	96.3	96.7	96.8	96.6	95.5	93.9	96.7	98.3	98.9	99.6	99.9	100	99.8	98.5	96.0		
120	88.5	89.0	89.5	89.9	89.9	89.6	88.5	87.2	89.9	91.5	92.3	93.0	93.3	93.6	93.2	92.0	89.6		
125	80.9	81.4	81.9	82.3	82.4	82.1	80.4	79.5	82.5	84.1	85.0	85.7	86.1	86.3	85.9	84.8	82.8		
130	72.8	73.5	74.0	74.3	74.4	74.1	71.1	70.5	74.7	76.1	77.1	77.8	78.3	78.4	78.1	77.0	75.3		
135	64.5	65.1	65.5	65.8	65.9	65.7	61.7	61.1	66.4	67.8	68.8	69.5	70.0	70.1	69.8	68.9	67.4		
140	55.7	56.3	56.8	57.2	57.1	56.9	52.6	51.5	57.7	59.1	60.1	60.9	61.4	61.5	61.1	60.4	59.3		
145	46.8	47.3	47.8	48.1	48.0	46.7	42.0	40.4	49.0	50.1	51.1	52.0	52.5	52.5	52.3	51.6	50.9		
150	37.6	38.1	38.5	38.7	38.8	34.6	30.5	29.1	39.3	40.5	41.9	42.7	43.2	43.4	43.3	42.8	42.3		
155	28.5	28.8	29.1	29.4	29.5	22.7	19.2	18.1	28.8	30.9	32.7	33.4	33.9	34.1	34.1	33.9	32.8		
160	19.5	19.7	19.9	20.1	20.1	13.6	10.3	10.3	18.5	21.4	22.9	23.8	24.3	24.7	25.1	25.3	23.5		
165	9.86	9.96	10.0	10.3	10.2	8.06	5.52	7.90	9.79	11.4	12.3	12.4	12.5	13.1	13.6	14.0	12.6		
170	0.75	1.02	1.21	1.34	1.44	1.37	1.01	2.10	2.17	2.20	2.48	2.04	1.94	2.28	2.66	2.91	2.85		
175	0.17	0.17	0.17	0.18	0.18	0.19	0.21	0.22	0.25	0.29	0.30	0.32	0.33	0.34	0.35	0.36	0.36		
180	0.06	0.06	0.07	0.06	0.06	0.06	0.07	0.07	0.07	0.06	0.06	0.06	0.06	0.06	0.06	0.06	0.06		

Table 7: Luminous Intensity Data

EQUIPMENT LIST

Test Equipment	Model	Equipment No.	Calibration Date	Calibration Due date
Goniophotometer system	GO-R5000	HZTE011-01	Aug. 05, 2021	Aug. 04, 2022
Digital Power Meter	PF2010A	HZTE028-01	Aug. 05, 2021	Aug. 04, 2022
AC Power Supply	DPS1060	HZTE001-06	Aug. 05, 2021	Aug. 04, 2022
DC Power Supply	WY12010	HZTE004-03	Aug. 05, 2021	Aug. 04, 2022
Temperature recorder	JM624U	HZTE018-08	Aug. 05, 2021	Aug. 04, 2022
Temperature and humidity recorder	JR900	HZTE018-01	Aug. 05, 2021	Aug. 04, 2022
Standard source	D908	HZTE012-01	Aug. 05, 2021	Aug. 04, 2022
Integrate Sphere system	3M	HZTE015-04	Aug. 05, 2021	Aug. 04, 2022
Digital Power Meter	WT210	HZTE008-01	Aug. 05, 2021	Aug. 04, 2022
AC Power Supply	PCR 500L	HZTE001-07	Aug. 05, 2021	Aug. 04, 2022
DC Power Supply	IT6154	HZTE004-04	Aug. 05, 2021	Aug. 04, 2022
Standard source	SCL-1400	HZTE012-02	Aug. 05, 2021	Aug. 04, 2022
Temperature and humidity recorder	JR900	HZTE018-02	Aug. 05, 2021	Aug. 04, 2022
Temperature Meter	TES1310	HZTE017-01	Aug. 05, 2021	Aug. 04, 2022

Table 7: Test Equipment List

TEST METHODS

Seasoning of SSL Product

For the purpose of rating new SSL products, SSL products shall be tested with no seasoning. Therefore, no seasoning was performed.

Sphere-Spectroradiometer Method- Photometric and Electrical Measurements

A Labsphere Model CDS 2100 Spectroradiometer and 3 Meter Sphere was used to measure correlated color temperature, chromaticity coordinates, and the color rendering index for each SSL unit. The coating reflectance of each sphere is 98%. The measure geometry is 4π . Self-absorption correction is conducted in testing. Bandwidth of spectroradiometer is 350nm-1050nm.

Ambient temperature was measured at a position inside the sphere. Each SSL unit was operated on the client provided driver at the rated input voltage in its designated orientation.

The stabilization time typically ranges from 30 min (small integrated LED lamps) to 2 or more hours for large SSL luminaires). It can be judged that stability is reached when the variation (maximum – minimum) of at least 3 readings of the light output and electrical power over a period of 20 min, taken 10 minutes apart, is less than 0.5 %.

Electrical measurements including voltage, current, and power were measured using the Yokogawa Power Analyzer.

The standard reference of the integrated sphere system is halogen incandescent lamp, the intensity distribution type is omni-directional, and is traceable to the National Institute of Standards and Technology.

The uncertainty of integrating sphere system reported in this document is expanded uncertainty is 2.1% with a coverage factor $k=2$.

Goniophotometer Method

Photometric and Electrical Measurements

An EVERFINE Type C Model GO-R5000 Goniophotometer was used to measure the intensity at each angle of distribution for each sample. The photometric distance is 2.475m for near-field measurement or 30m for far-field measurement. Bandwidth of spectroradiometer is 380nm-780nm.

Ambient temperature was measured at the same height of the sample mounted on the Goniophotometer equipment. Each SSL unit was operated on the client provided driver at the rated input voltage in its designated orientation.

The stabilization time typically ranges from 30 min (small integrated LED lamps) to 2 or more hours for large SSL luminaires). It can be judged that stability is reached when the variation (maximum – minimum) of at least 3 readings of the light output and electrical power over a period of 20 min, taken 10 minutes apart, is less than 0.5 %.

Electrical measurements including voltage, current, and power were measured using the Everfine Digital Power Meter.

Some graphics were created with Photometric Plus software.

The standard reference of the Goniophotometer system is halogen incandescent lamp, the intensity distribution type is omni-directional, and is traceable to the National Institute of Metrology P.R. China.

The uncertainty of goniophotometer system reported in this document is expanded uncertainty is 2.3% with a coverage factor $k=2$.

Color Characteristics Measurements

The color characteristics of SSL products include chromaticity coordinates, correlated color temperature, and color rendering index. These characteristics of SSL products may be spatially non-uniform, and thus, in order that they can be specified accurately, the color quantities shall be measured as values that are spatially average, weighted to intensity, over the angular range where light is intentionally emitted from the SSL product. The color characteristics measurements are using gonio-spectroradiometer.

*** End of Report ***

This report is considered invalidated without the Special Seal for Inspection of the LTL. This report shall not be altered, increased or deleted. The results shown in this test report refer only to the sample(s) tested. Without written approval of LTL, this test report shall not be copied except in full and published as advertisement.