

SKYLINE

AREA & FLOOD LIGHT



SKYLINE SERIES
*Premier Solution for a Variety
of Outdoor Applications*



SUPERIOR QUALITY

INTRODUCING

Skyline Medium

Shown with Universal Mounting Arm and HSS Option



Performance, Delivered

The sleek aesthetic of the Skyline Series makes it perfectly suited for a wide variety of specification or commercial lighting applications. Designed for both new construction and retrofit, the Skyline provides a one-for-one solution for replacing legacy metal halide or high-pressure sodium luminaires while providing industry leading uniformity and application targeted performance.

Priced for Payback

Priced for a quick ROI, its cost-effective diecast aluminum housing comes in two sizes with DLC® Premium efficacies of up to 165 LPW, making it the best choice for low acquisition cost and high energy savings. The highly configurable Skyline series provides superior illumination, reliability, and ease of installation, exceeding most application requirements.

Sleek & Low-Profile Design

Featuring an extremely low EPA, Skyline allows for thinner or smaller poles that reduce overall project costs.



Standard Powder Coat Finishes Available



ILP White



ILP Silver



ILP Bronze



ILP Black

FEATURES

9 Mounting Methods Available



Universal Mounting Bracket
(Round or Square Pole)



Universal Adjustable Mount Bracket
(Round or Square Pole)



Adjustable Slip Fitter



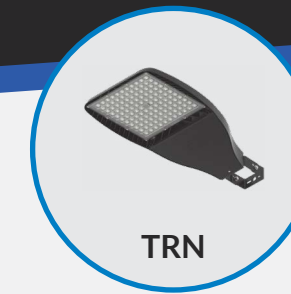
Horizontal Tenon Mount
(Mast Arm)



Wall Mount Bracket



Wall Adjustable Mount Bracket



Trunnion Mount

3 Color Temperature Options
(CCTs): 5000K, 4000K & 3000K

Configurable Lumen Packages between 6L - 42L

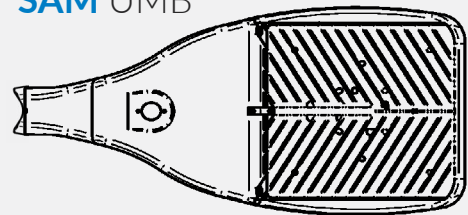
High Efficacy - Up to 166 LPW

5 Rotatable Area Light Optical Distributions

3 Versatile Flood Light Optical Distributions

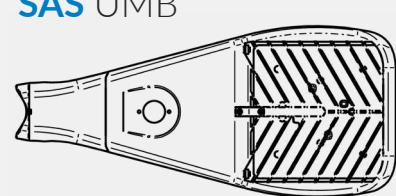
Optional Back/Spill Light Control via Field
Installable Integral Shield (HSS)

SAM UMB

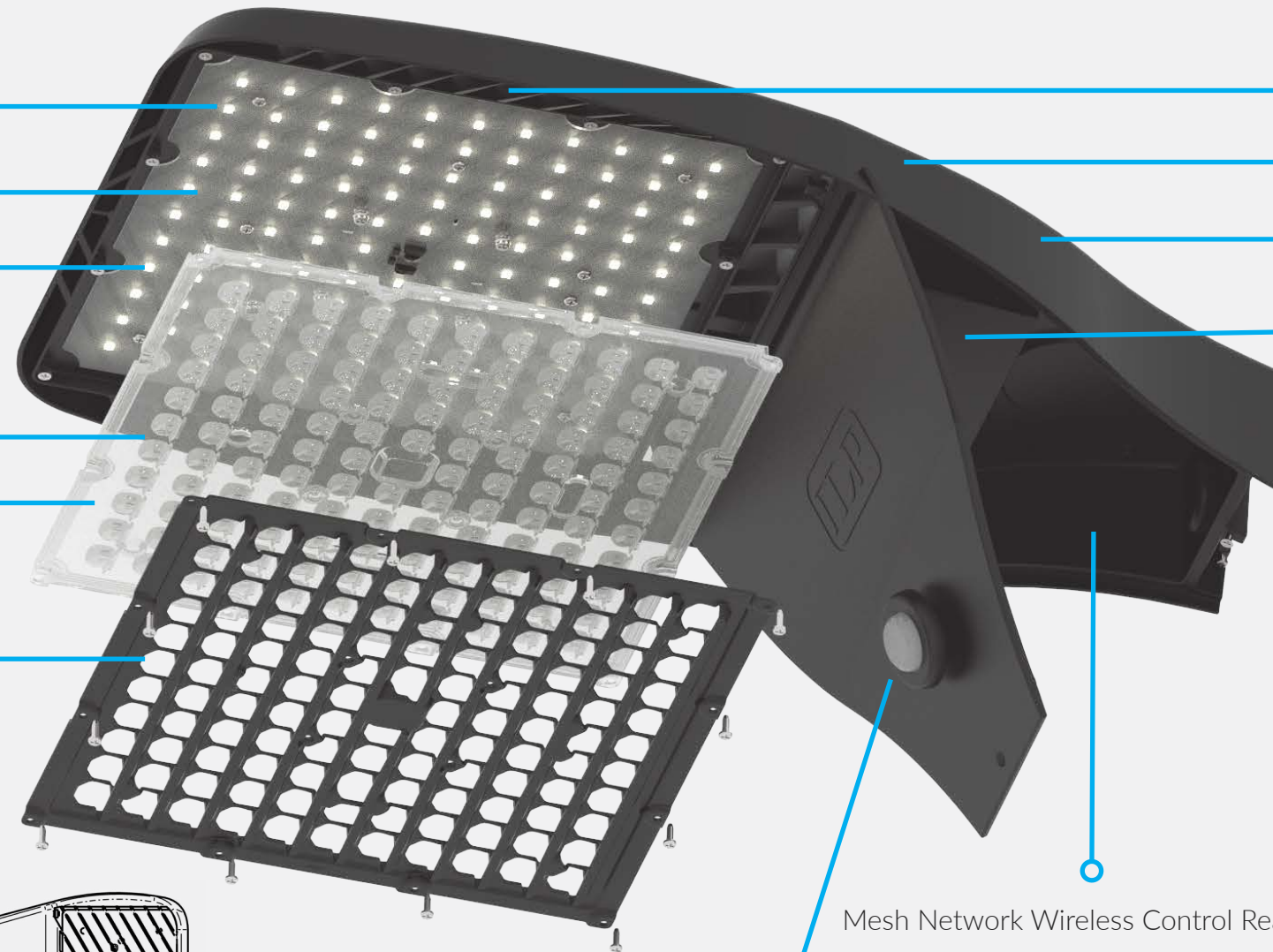


33.03"

SAS UMB



25.02"



Unparalleled Thermal Management

One Piece Diecast Aluminum Main Housing

IP66 Rated Whole Luminaire

Factory-Programmable & SR LED Drivers
120-277V or 347-480V

Mesh Network Wireless Control Ready

Optional IP66 Bluetooth Dual Sensor
(Daylight and Motion)

Quick-Mount for One-Person Install

Round Pole Adapter
Provided Standard

HIGHEST UNIFORMITY

IN ITS CLASS

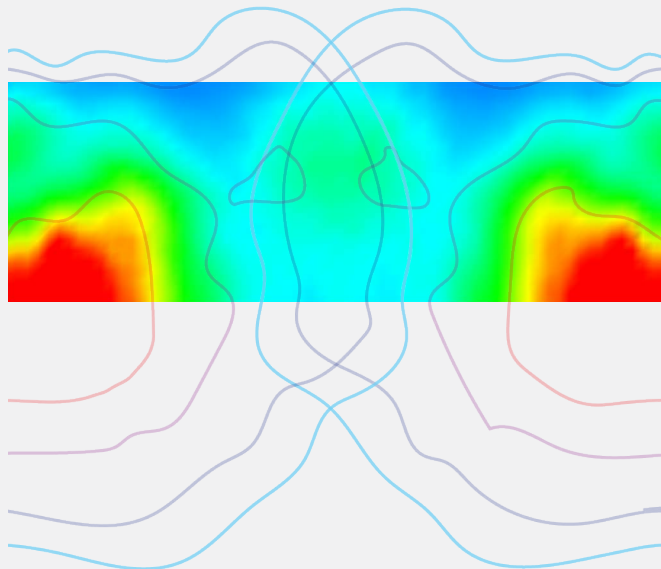


Highest Uniformity in its Class

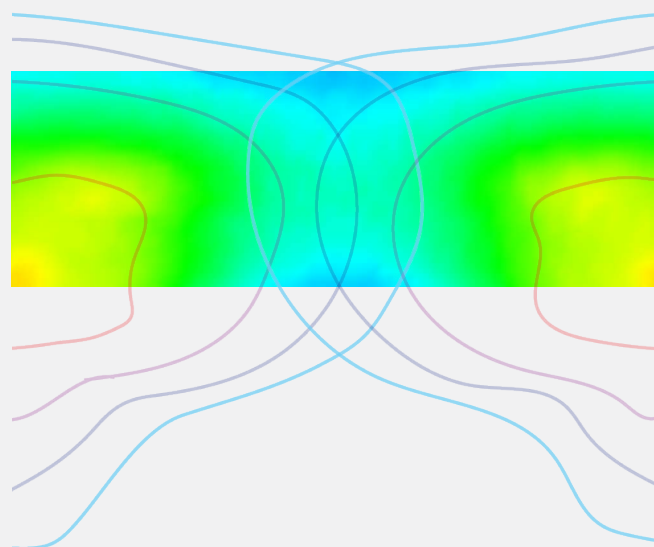
400W HID COMPETITOR VS. SKYLINE 18L

- Higher Uniformity & Coverage
- No Wasteful Hot Spot
- Better Backlight Control
- 70% Energy Savings

COMPETITOR

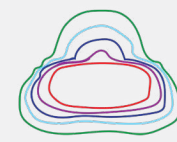


SKYLINE 18L

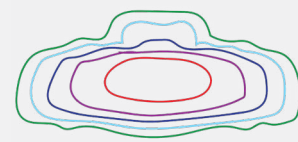


Optic Rotation & Patterns

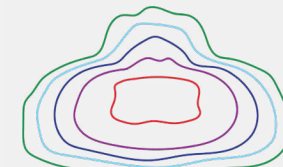
The Skyline Area Light luminaire boasts a wide variety of high-performance photometric distributions, providing superior site illumination in a variety of outdoor applications. The highly configurable, rotatable optics accommodate endless designs to enhance both aesthetics and safety — allowing luminaire uniformity while spreading light at desired foot-candle levels across the site.



FTA



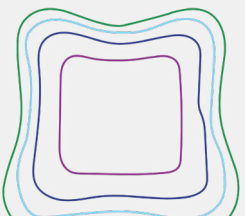
T2



T3



T4



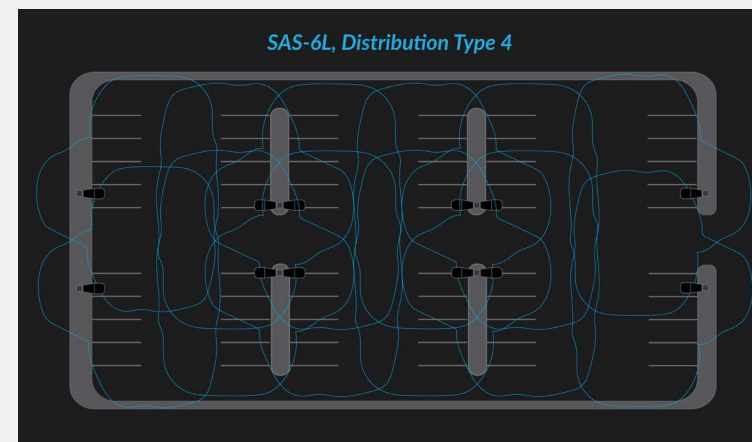
T5S

Why Uniformity Matters

Research shows that uniform light distribution can be just as important as overall foot-candle levels in delivering security and perceived pedestrian safety in outdoor environments.

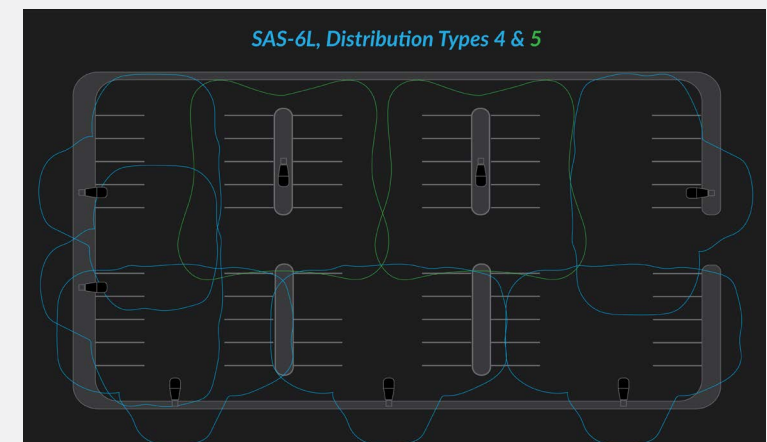
A study conducted by the Rensselaer Polytechnic Institute at the Lighting Research Center in New York¹ found that when foot-candle levels and max:min uniformity ratios were adjusted, a more uniformly illuminated parking lot was perceived as substantially safer than one with lower uniformity.

With the highest uniformity in its class, Skyline reduces the number of heads/poles required on a project site, resulting in a 33% decrease in energy consumption.



AVERAGE
20 lux / 2 FC

MAX/MIN
15:1



AVERAGE
5 lux / 0.5 FC

MAX/MIN
2:1

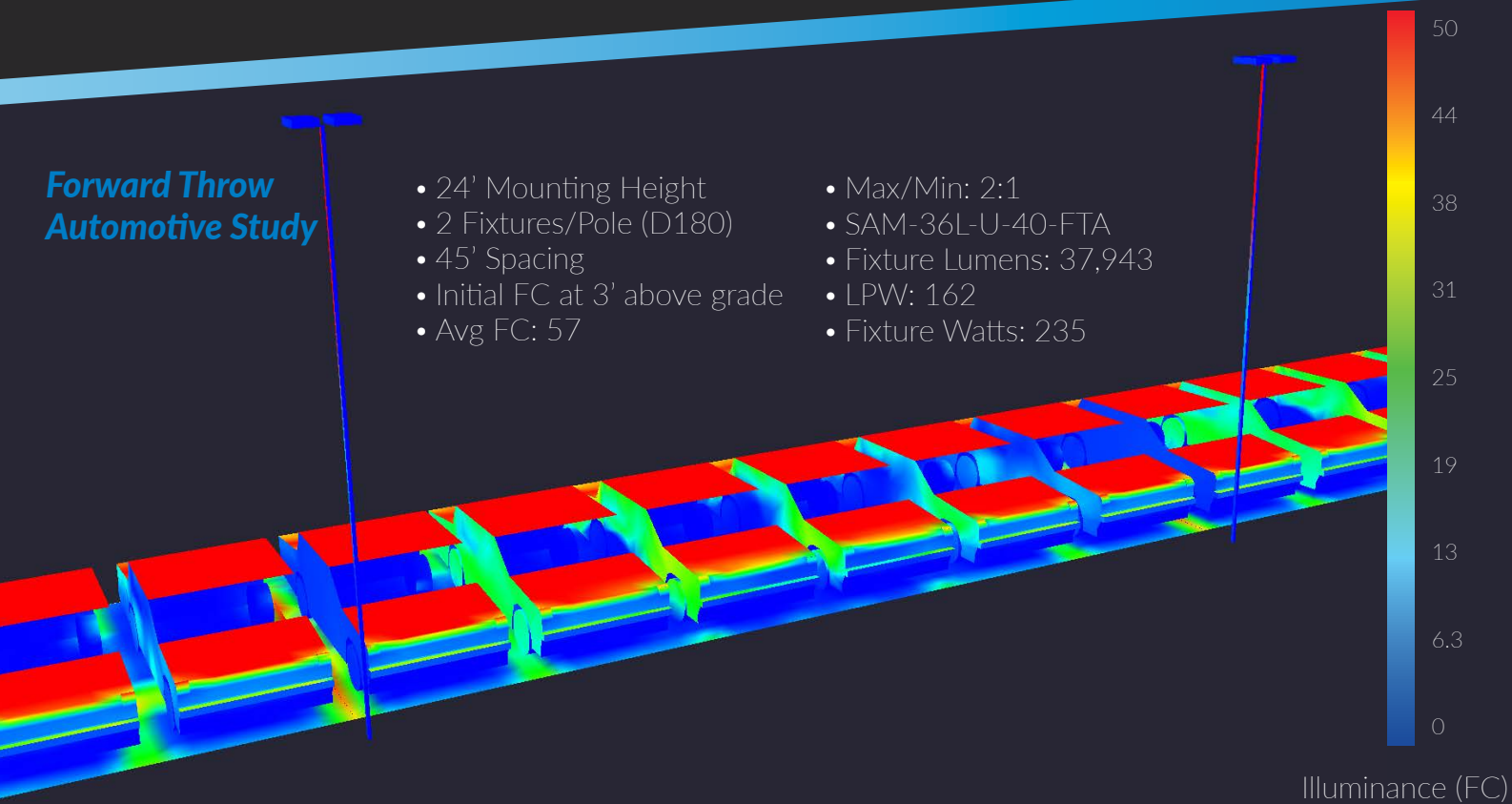
¹ Lrc.rpi.edu. 2021. Parking Lot Lighting with Improved Uniformity | Research Activities | Solid State Lighting | Programs | LRC. [online] Available at: <<https://www.lrc.rpi.edu/programs/solidstate/parkingLotUniformity.asp>>

HIGH PERFORMANCE

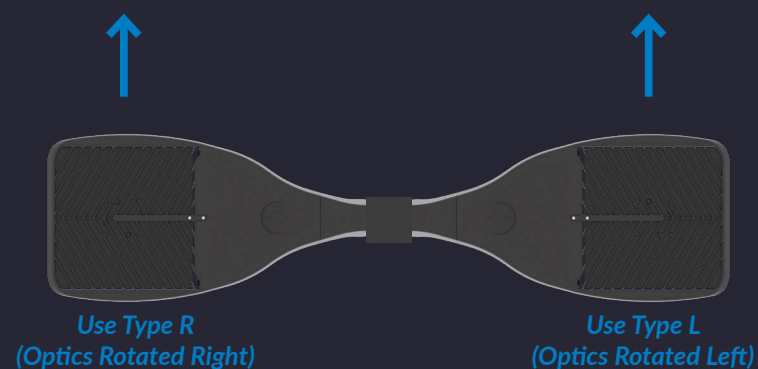
DISTRIBUTIONS

Forward Throw Automotive Study

- 24' Mounting Height
- 2 Fixtures/Pole (D180)
- 45' Spacing
- Initial FC at 3' above grade
- Avg FC: 57
- Max/Min: 2:1
- SAM-36L-U-40-FTA
- Fixture Lumens: 37,943
- LPW: 162
- Fixture Watts: 235



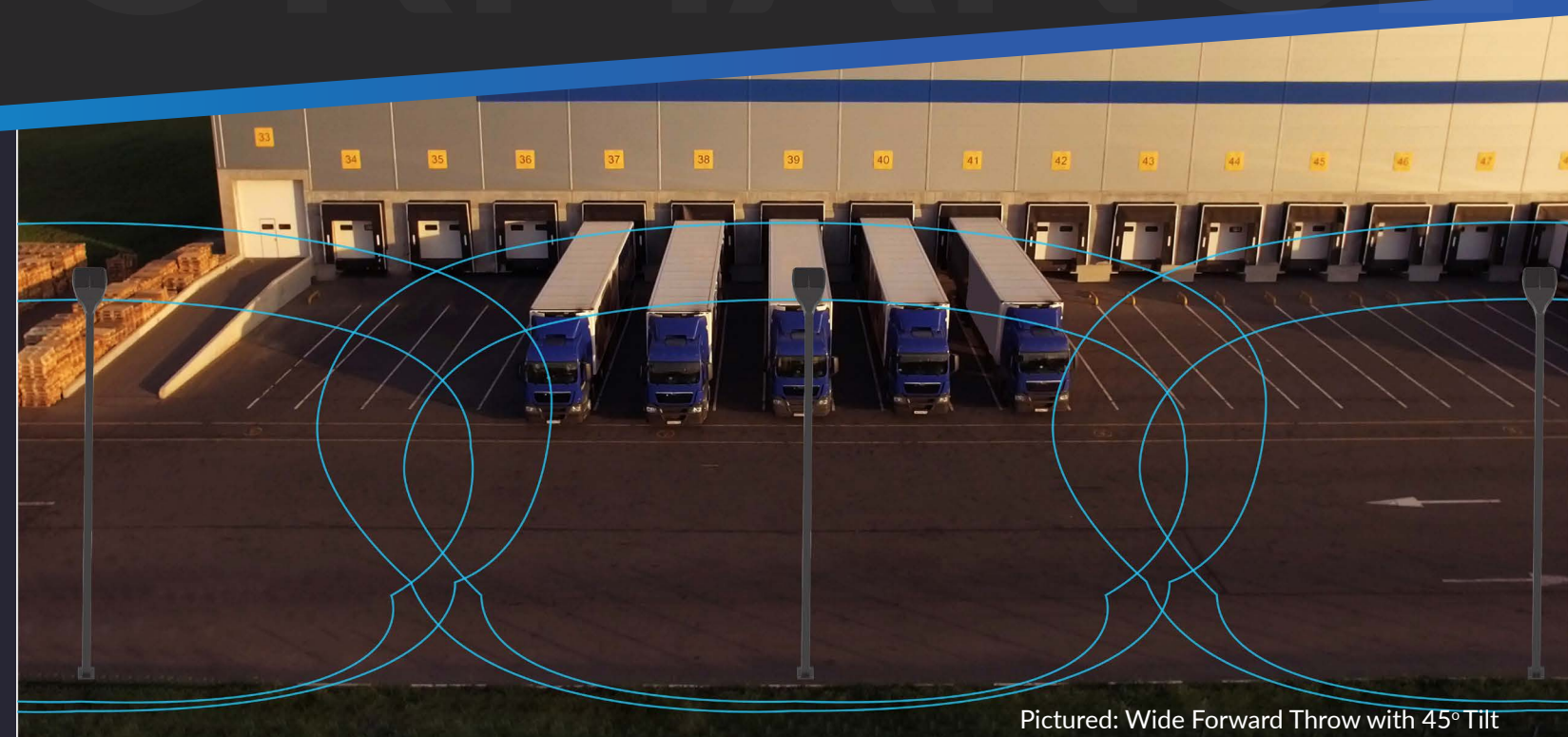
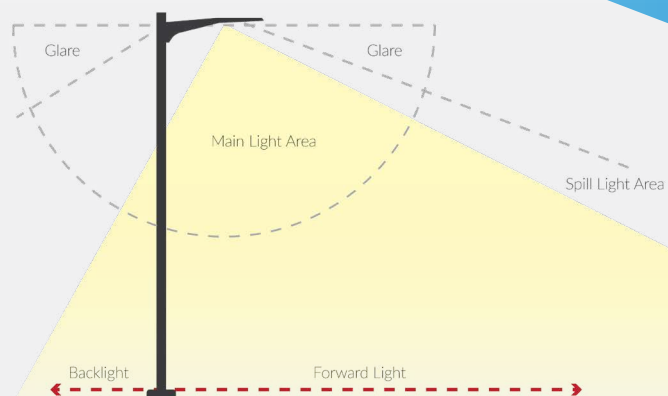
Fully Customizable, Rotatable Optics



Use Type R
(Optics Rotated Right)

Use Type L
(Optics Rotated Left)

Backlight Optical Control



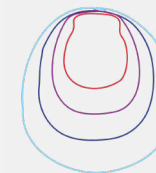
Get FLOODED with Savings

Skyline LED floodlights have a comprehensive offering of flood photometric distributions that provide superior illumination. Options include an innovative “wide forward throw” distribution that evenly illuminates large sites that rely on perimeter lighting, a “very wide” distribution for maximum coverage, and a “medium” distribution for highlighting specific objects or areas.

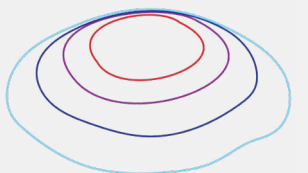
Flood Optic Patterns



Medium



Wide Forward Throw
With 45° Tilt



Very Wide
With 45° Tilt

Performance

The Skyline boasts performance of up to 166 LPW with nine standard lumen packages all available in 3,000K, 4,000K, and 5,000K.

Lumen Package	6,000	9,000	12,000	15,000	18,000	24,000	30,000	36,000	42,000	50,000
Wattage	46	69	82	108	135	165	223	238	276	350
LPW	147.6	139.5	157.2	150.8	139.5	159.7	151.4	166.7	159.5	154.4

WIRELESS CONTROLS

OUR PARTNERS

ILP partners with industry-leading control companies that provide highly-scalable and innovative lighting solutions. By integrating advanced software applications, sensors, and connected devices directly into our performance luminaires, you are able to control both indoor and outdoor spaces while reducing energy costs, improving occupancy comfort and perceived safety, and more.



Legrand's Wattstopper offering of Lighting Control Systems and Bluetooth programmable sensors is the most comprehensive portfolio of simple, scalable, and flexible lighting controls. Wattstopper's industry-leading, energy-efficient lighting control technology is designed to meet code, ensure ease of installation, and enable precision control in both indoor and outdoor applications.



Utilizing a robust 2.4 GHz Self-Healing Mesh Network, Synapse provides flexibility and scalability making it a perfect outdoor solution for both new construction and retrofit projects. The easy-to-use web application is accessible on any device with an internet connection and allows for complete customization of the system and its features.



Using High Density Mesh technology (HDM) for easy commissioning and installation, Limelight by Lutron streamlines your specification and design projects. By integrating Lutron's Enterprise Vue software, you are able to control all of your building lighting from a single platform. This allows you to meet compliance for the most recent energy codes including IECC, Ashrae, and Title 24.



Enlighted's three-tier, over-the-air upgradeable wireless control platforms provide out-of-the-box compliance with energy use regulations. The comprehensive capabilities of the sensor include vacancy detection, daylight harvesting, demand response, and energy savings reporting. Enlighted's enterprise system allows for easy integration of indoor and outdoor lighting with building management systems for site-wide IOT management.





SKYLINE



ilp-inc.com