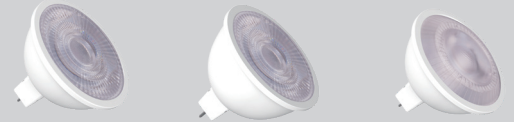


VALUE SELECT MR FAMILY

MODEL

Model: 6.5MR16DIM/xxxxyyy/35W
6.5MR16DIM/xxxxyyy

Where xxx means 824-965 which indicates CRI and color temperature
Where yyy means beam angle



ELECTRONIC TRANSFORMER COMPATIBILITY

Model: 6.5MR16DIM/xxxxyyy/35W

Brand	Model	Compatibility
Hatch	RS12-60M-LED (DC1340)	Compatible*
	RS12-60M (DC1124LED)	Compatible
	RS12-60M-LED (DC1323)	Compatible*
	RS12-60M (DC1130)	Compatible
	RS12-80M (DC1931)	Not Cpmatible
	RS12-30M -LED (DC1418)	Compatible*
	RS12-15M-LED (DC1538K)	Compatible*
	RS12-60M	Compatible
	RS12-60M-LED	Compatible
	RS12-30M -LED	Compatible*
	RS12-15M-LED	Compatible
Lightech	LET60	Compatible
	LET75	Compatible

ELECTRONIC TRANSFORMER COMPATIBILITY

Model: 6.5MR16DIM/xxxxyyy

Brand	Model	Compatibility
Hatch	RS12-60M-LED (DC1340)	Compatible*
	RS12-60M (DC1124LED)	Compatible
	RS12-60M-LED (DC1323)	Compatible*
	RS12-60M (DC1130)	Compatible
	RS12-80M (DC1931)	Compatible
	RS12-30M -LED (DC1418)	Compatible*
	RS12-15M-LED (DC1538K)	Compatible*
	RS12-60M	Compatible*
	RS12-60M-LED	Compatible
	RS12-30M -LED	Compatible*
	RS12-15M-LED	Compatible*
Lightech	LET60	Compatible
	LET75	Compatible

* There is a slight noise from transformer when it's connected to our lamp.



VALUE SELECT MR FAMILY

MAGNETIC TRANSFORMER COMPATIBILITY

Model: 6.5MR16DIM/xxxxyyyy/35W 6.5MR16DIM/xxxxyyyy

Brand	Model	Compatibility
Cooper	TF-149911-TP120	Compatible
	TF-149911-TP	Compatible
Elco	SSH-6626002	Compatible
Hatch	DL1250B-H	Compatible
Juno	VF180-210	Compatible
Halo	QE001292AS	Compatible
Contech	CTL216T-P	Compatible
	CTL-1216T	Compatible
	CTL-8816T	Compatible
Elco	ET528	Compatible
Nora	NTL-214	Compatible
	NTL-222	Compatible
Juno	T537	Compatible
	T538	Compatible
	T809WH	Compatible
Satco	TH236	Compatible

GREEN CREATIVE has provided this transformer compatibility chart for guidance when selecting a transformer and lamp combination. Our lamps were tested for compatibility with the above listed transformers. Transformers that do not appear on the chart might still be compatible but have not been tested. All testing has been performed with a stable main supply. The quality of the local main, existing installation and wiring, as well as different manufacturer versions of the above transformers may affect performance. Since no assurance can be provided regarding these factors, it is a general recommendation to perform a test on-site prior to installing the LED lamp